

# Public Health Ethics in Practice:

Impact and relevance of ethical frameworks on  
decision-making during the H1N1 pandemic

A project led by the  
National Collaborating Centre for Healthy Public Policy

Funded by the  
Public Health Agency of Canada

Montréal, March 17, 2010



Centre de collaboration nationale  
sur les politiques publiques et la santé  
National Collaborating Centre  
for Healthy Public Policy

*Institut national  
de santé publique*  
Québec 

# *The National Collaborating Centre for Healthy Public Policy*

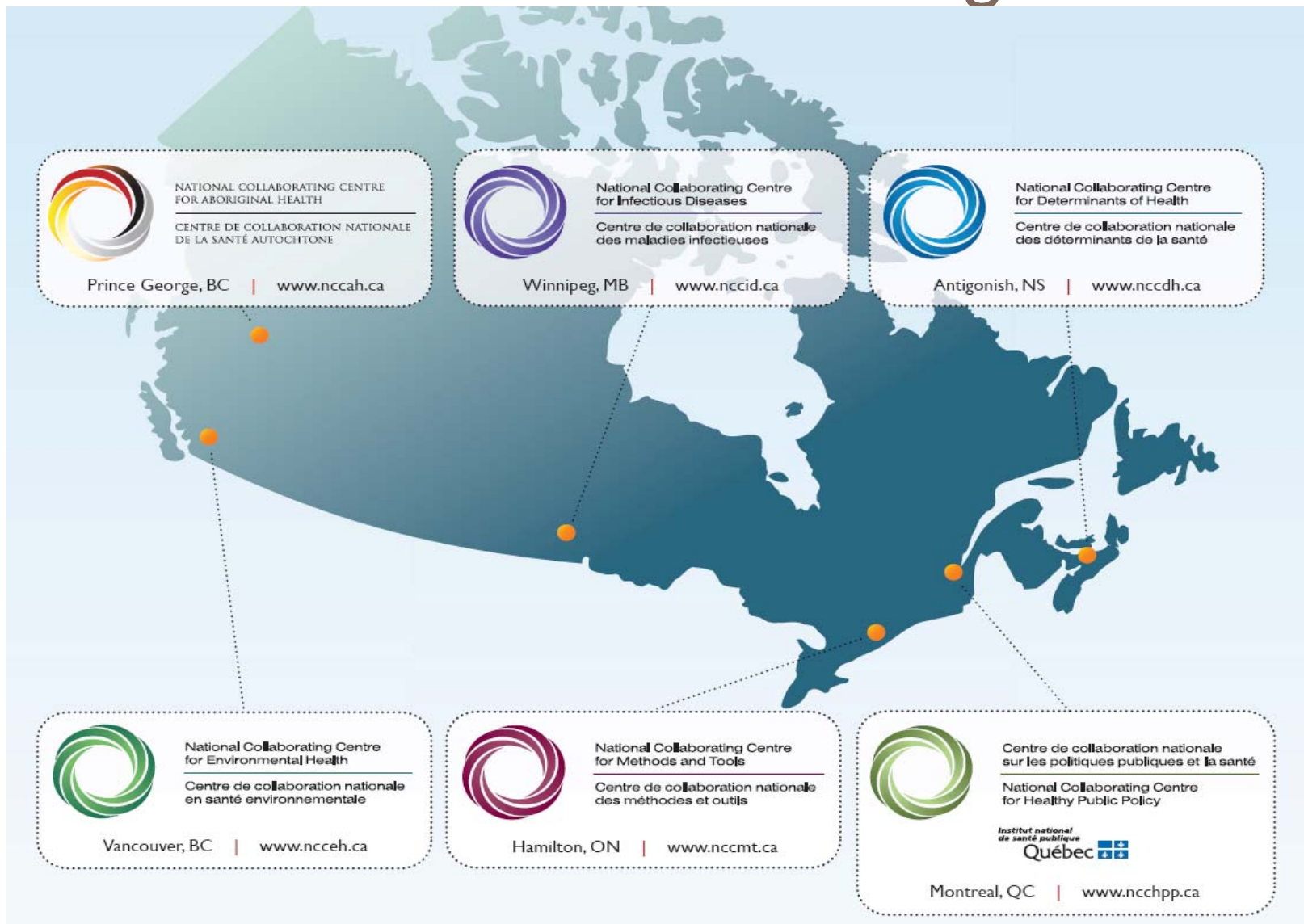
François Benoit



Centre de collaboration nationale  
sur les politiques publiques et la santé  
National Collaborating Centre  
for Healthy Public Policy

*Institut national  
de santé publique*  
Québec 

# Six National Collaborating Centres



*Different topics - Different institutions - Collective projects*

# The National Collaborating Centres

- Mission
  - To be the public health practitioners and decision-makers “bridge” with the research community
- Activities
  - Knowledge synthesis, translation and exchange
  - Identification of knowledge gaps
  - Network development



# The National Collaborating Centre for Healthy Public Policy

- Objective
  - To increase expertise of public health actors across Canada in healthy public policy
    - Development, sharing and use of knowledge
- Focus
  - Public policies and their impact on health
    - e.g. housing, transportation, food, education, social welfare, taxation
    - At various levels of government (or authority)
    - Policies other than health services (e.g. waiting times)
  - Public policy process
  - Methodology (KT, policy analysis)



# Today's objectives

- Explore the relevance and utility of ethical deliberation and justification in the context of a public health emergency
- Explore unmet needs and directions for the continued development of applied public health ethics tools and guidance



# Questions

1. How did existing ethical frameworks for pandemic planning and response assist, guide and/or constrain actual deliberation and decision-making during the H1N1 response?
2. What are the implications of the existence of a variety of guides for ethical decision-making during a public health crisis?
3. What support, resources, and access to expertise in terms of practical ethical guidance are needed by public health actors at territorial/provincial, regional, and local levels?



# Agenda

Time	Activities	Facilitator	Length
8:30 am	Welcome and introductions <ul style="list-style-type: none"> <li>•Objectives</li> <li>•Ice-breaking activity</li> </ul>	NCCHPP	30 mins
9:00 am	Survey of pandemic plans and related policy statements containing frameworks for ethical decision-making	McDougall	30 mins
9:30 am	Keynote speaker – Cécile Bensimon		45 mins
10:15 am	Light nutrition break		15 min
10:30 am	How did existing ethical frameworks for pandemic planning and response assist, guide and/or constrain actual deliberation and decision-making during the H1N1 response? <ul style="list-style-type: none"> <li>•Break out groups</li> <li>•Report back in plenary session</li> </ul>	NCCHPP	90 mins
Noon	Lunch (coffee and deserts served in meeting room)		45 min





# Agenda (Cont'd)

Time	Activities	Facilitator	Length
12:45 pm	Keynote speakers – Pilar Ramón-Pardo and Lindsay Wilkinson		45 mins
1:30 pm	What are the implications of the existence of a variety of guides for ethical decision-making during a public health crisis? <ul style="list-style-type: none"> <li>• Plenary session</li> </ul>	NCCHPP	30 mins
2:00 pm	What support, resources, and access to expertise in terms of practical ethical guidance are needed by public health actors at territorial/provincial, regional, and local levels? <ul style="list-style-type: none"> <li>• Break out groups</li> <li>• Intervention by Eve Cheuk</li> </ul>	NCCHPP	30 mins
2:30 pm	Nutrition break		15 mins
2:45 pm	(Cont'd) What support, resources, and access to expertise in terms of practical ethical guidance are needed by public health actors at territorial/provincial, regional, and local levels? <ul style="list-style-type: none"> <li>• Report back in plenary session</li> </ul>	NCCHPP	55 mins
3:40 pm	Meeting wrap-up <ul style="list-style-type: none"> <li>• Meeting evaluation</li> </ul>	McDougall	20 mins



# Your Input

- Your input is extremely important to better understand the needs and contexts of the public health community
  - Feedbacks on the Survey of pandemic plans and related policy statements
- A summary report will be provided to you in the next few weeks



# The rules of engagement

"When a meeting, or part thereof, is held under the Chatham House Rule, participants are free to use the information received, but neither the identity nor the affiliation of the speaker(s), nor that of any other participant, may be revealed."

Simultaneous translation (FR-ENG) is available today, please feel free to use the language of your choice.





## **Right to speak**

If you want to speak about an issue that is currently under discussion



## **Right to speak**

If you want to speak about a new issue that is not under discussion

# Icebreaker

- Tell us about yourself in 30 seconds or less
  - What drew you to the field of public health?
  - What **two or three words** would best capture your experience during the H1N1 response?



# ***Survey of pandemic plans and related policy statements containing frameworks for ethical decision-making***

Christopher W. McDougall



Centre de collaboration nationale  
sur les politiques publiques et la santé  
National Collaborating Centre  
for Healthy Public Policy

**Institut national  
de santé publique**  
Québec 

# *Keynote Speaker*

# *Cécile Bensimon*



Centre de collaboration nationale  
sur les politiques publiques et la santé  
National Collaborating Centre  
for Healthy Public Policy

*Institut national  
de santé publique*  
Québec 



# *Short Break*



Centre de collaboration nationale  
sur les politiques publiques et la santé  
National Collaborating Centre  
for Healthy Public Policy

*Institut national  
de santé publique*  
Québec 

# Question 1

How did existing ethical frameworks for pandemic planning and response assist, guide and/or constrain actual deliberation and decision-making during the H1N1 response?



***Lunch***  
***&***  
***Keynote speakers***  
***Pilar Ramón-Pardo & Lindsay Wilkinson***



Centre de collaboration nationale  
sur les politiques publiques et la santé  
National Collaborating Centre  
for Healthy Public Policy

Institut national  
de santé publique  
Québec 

# Question 2

What are the implications of the existence of a variety of guides for ethical decision-making during a public health crisis?



# Question 3

What support, resources, and access to expertise in terms of practical ethical guidance are needed by public health actors at territorial/provincial, regional, and local levels?



# *Meeting wrap-up*



Centre de collaboration nationale  
sur les politiques publiques et la santé  
National Collaborating Centre  
for Healthy Public Policy

*Institut national  
de santé publique*  
Québec 

# Wrap Up

- Next step
  - A summary report in the next few weeks
- Meeting evaluation
  - Please, take a few moments to give us your thoughts on this meeting by completing the evaluation survey
  - Your comments will remain confidential
- Reimbursements
  - Travel expense form (mail or email)



# Contact Details

## National Collaborating Centre for Healthy Public Policy

Institut national de santé publique du  
Québec

190, boulevard Crémazie Est  
Montréal (Québec) H2P 1E2

Website: [www.ncchpp.ca](http://www.ncchpp.ca)

Tel.: 514-864-1600 ext.3615

Fax: 514-864-5180

## François Benoit

Lead

Email: [francois.benoit@inqpq.qc.ca](mailto:francois.benoit@inqpq.qc.ca)

## Christopher McDougall

Research Officer

Email: [christopher.mcdougall@inqpq.qc.ca](mailto:christopher.mcdougall@inqpq.qc.ca)

## Marianne Jacques

Network Development Officer

Email: [marianne.jacques@inspq.qc.ca](mailto:marianne.jacques@inspq.qc.ca)

## François-Pierre Gauvin

Research Officer

Email: [francois-pierre.gauvin@inqpq.qc.ca](mailto:francois-pierre.gauvin@inqpq.qc.ca)

