



# Situating Health Impact Assessment (HIA):

From environmental  
assessment to  
social determinant  
frameworks;  
From projects to policies



Centre de collaboration nationale  
sur les politiques publiques et la santé  
National Collaborating Centre  
for Healthy Public Policy

*Institut national  
de santé publique*  
Québec 



NATIONAL COLLABORATING CENTRE  
FOR ABORIGINAL HEALTH  
CENTRE DE COLLABORATION NATIONALE  
DE LA SANTÉ AUTOCHTONE



# Health & Well-being

Education  
Social Inclusion  
Culture  
Language  
Inclusion  
Income  
Employment  
Early Childhood Development  
Housing  
Food Security

# Health Impact Assessment (HIA)

“[A] combination of **procedures, methods and tools** by which a policy, a program or project may be judged as to its **potential effects** on the health of a population and the **distribution of effects** within the population”.

(European Centre for Health Policy (ECHP). (1999). Health Impact Assessment: Main concepts and suggested approach. Gothenburg consensus paper. Brussels: WHO-Regional Office for Europe. Retrieved from:

[http://www.hiaconnect.edu.au/files/Gothenburg\\_Consensus\\_Paper.pdf](http://www.hiaconnect.edu.au/files/Gothenburg_Consensus_Paper.pdf) )

# HIA

- Policies,
- Programs,
- Projects

that are not intended to impact health but that have the potential to have negative AND/OR positive effects on health and health equity.

# What HIA is not

- An epidemiological study
- A subjective piece to prove a point
- A Human Health Risk Assessment
- A program evaluation

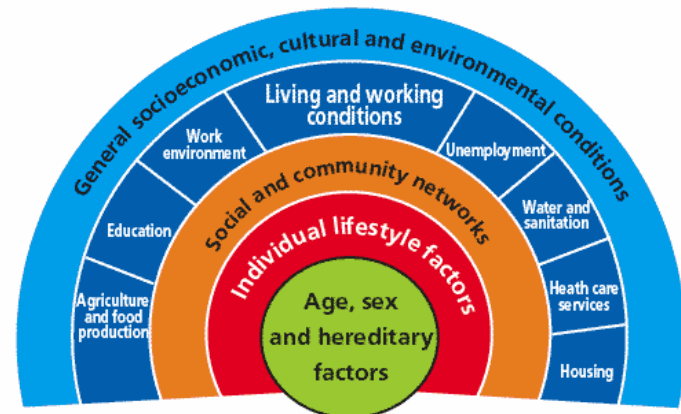
# Roots of HIA

- **19<sup>th</sup> Century Public Health**
  - The effect of living and working conditions on health
- **Environmental Impact Assessment (EIA)**
  - Structured, five step process
  - Scientific study of the potential effect(s) of a project on the environment
  - Objective to provide solid evidence

# Roots of HIA (continued)

- **Health promotion**

- Return to a holistic definition of health
- Healthy public policy
- Citizen participation

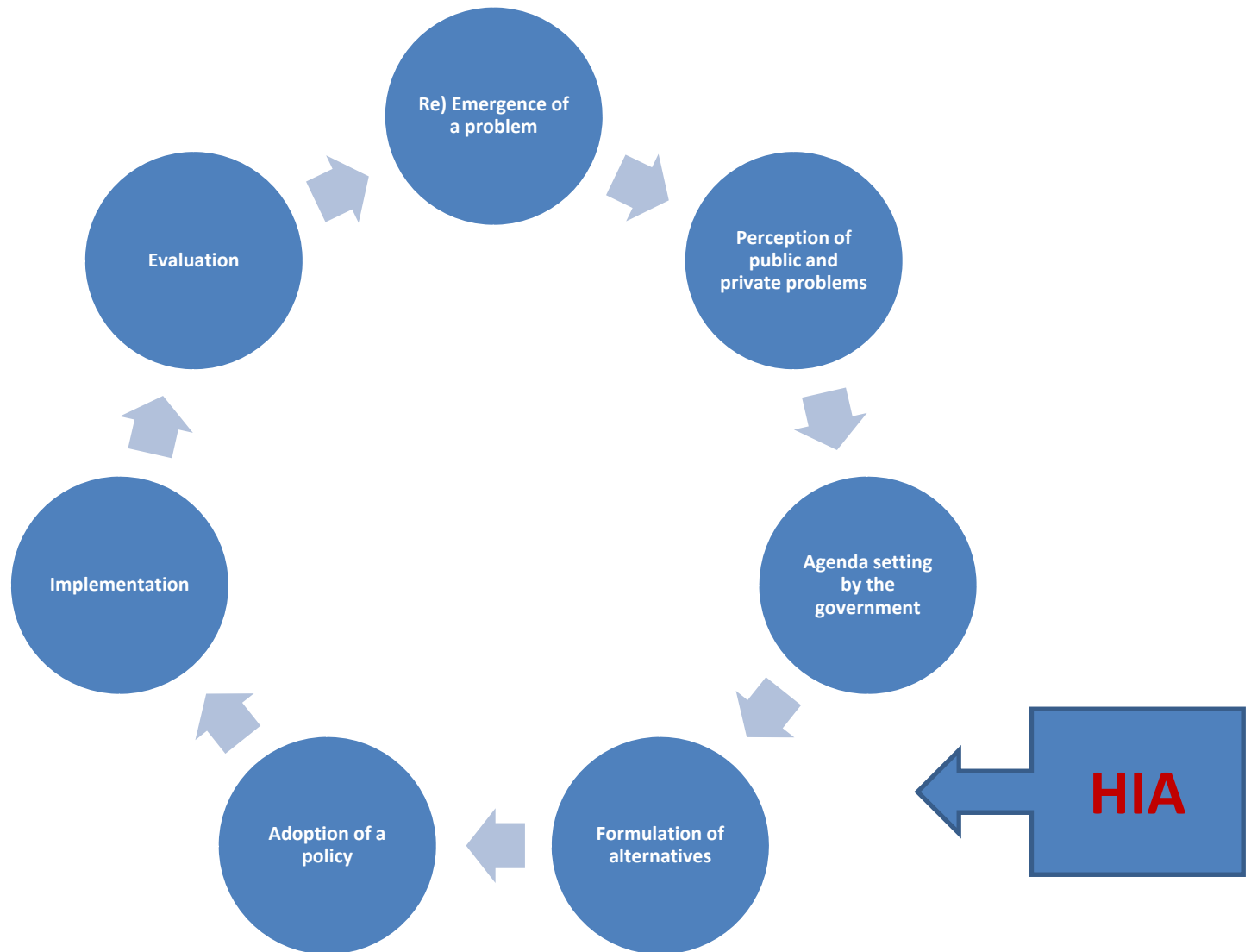


Source: Dahlgren, G. & Whitehead, M. (1991). *Policies and Strategies to Promote Social Equity in Health*. Stockholm: Institute for Future Studies.

- **Health equity**

- The distribution of effects among the population

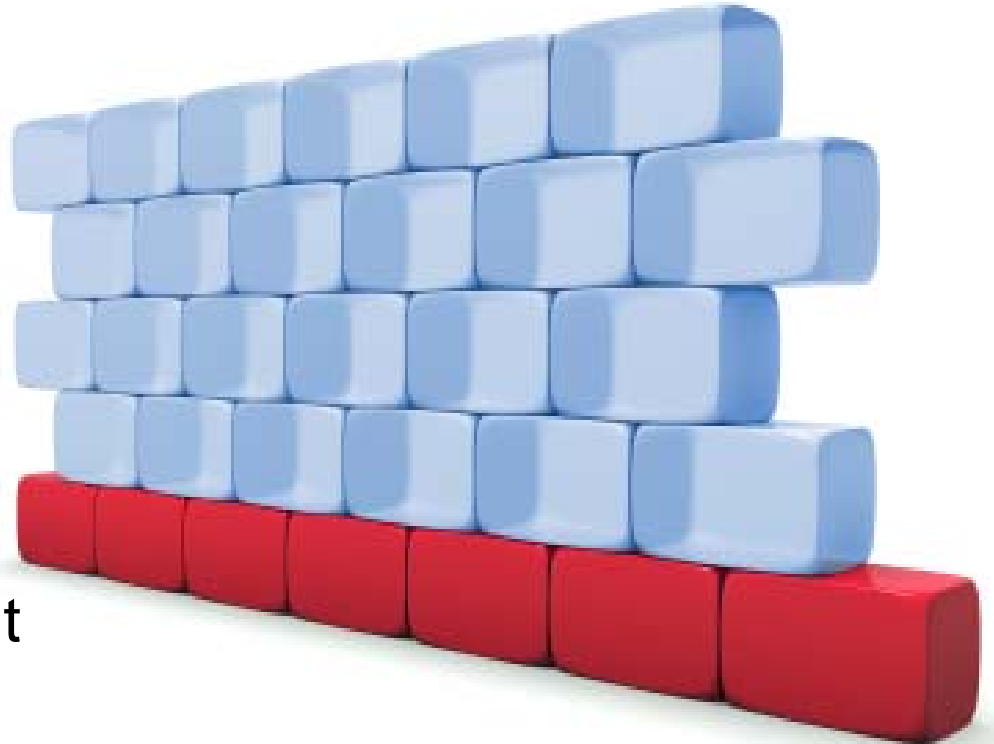
# HIA and the Policy Cycle





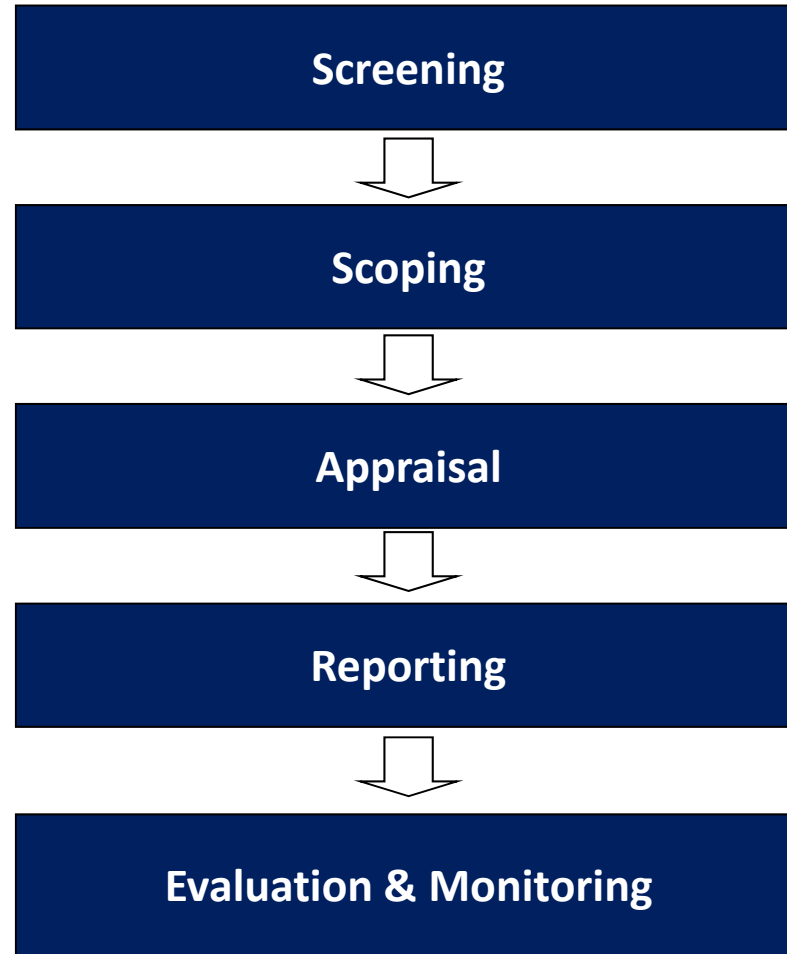
# HIA core values

- Democracy
- Equity
- Ethical use of evidence
- Sustainable development






© iStockphoto.com/Mohamed Sadath

# The HIA Process



# Different models of practice

Main purpose	Focus of the process	Relationship to "hard" evidence
Provide expert opinion	Scientific method	
Democracy/ empowerment	Citizen participation	
Integration of health in all policies	Intersectoral Dynamic	

# Related approaches

- Other types of impact analysis:
  - EIA, Social Impact Assessment (SIA), Strategic Environmental Assessment, Risk analysis...
  - Equity-focused HIA (EFHIA), Health equity impact Assessment (HEIA)
- Integrated Impact Analysis (IIA)

# Related approaches (con't)

- Health in All Policies
  - Health and well-being require the engagement of all sectors
  - HIA is one way (among others) to accomplish this objective
  - HIA is undertaken to support policy decision-making (win-win approach)

*See Adelaide Declaration at : [www.who.int/.../hiap\\_statement\\_who\\_sa\\_final.pdf](http://www.who.int/.../hiap_statement_who_sa_final.pdf)*

# Growing interest



# Conclusion: Important points

- The **social determinants of health, equity and healthy public policies** are at the heart of HIA
- Like EIA, HIA consists of **five steps** and **rigorous methods**, and aims to strengthen the decision-making process by providing **evidence**
- HIA is **prospective** and focuses on the proposals of PPP from **outside the health sector**
- HIA is related to **other types of impact assessment** and approaches to the adoption of healthy policies, programs and projects

# Questions & Discussion



Centre de collaboration nationale  
sur les politiques publiques et la santé  
National Collaborating Centre  
for Healthy Public Policy

*Institut national  
de santé publique*  
Québec 



NATIONAL COLLABORATING CENTRE  
FOR ABORIGINAL HEALTH  
CENTRE DE COLLABORATION NATIONALE  
DE LA SANTÉ AUTOCHTONE